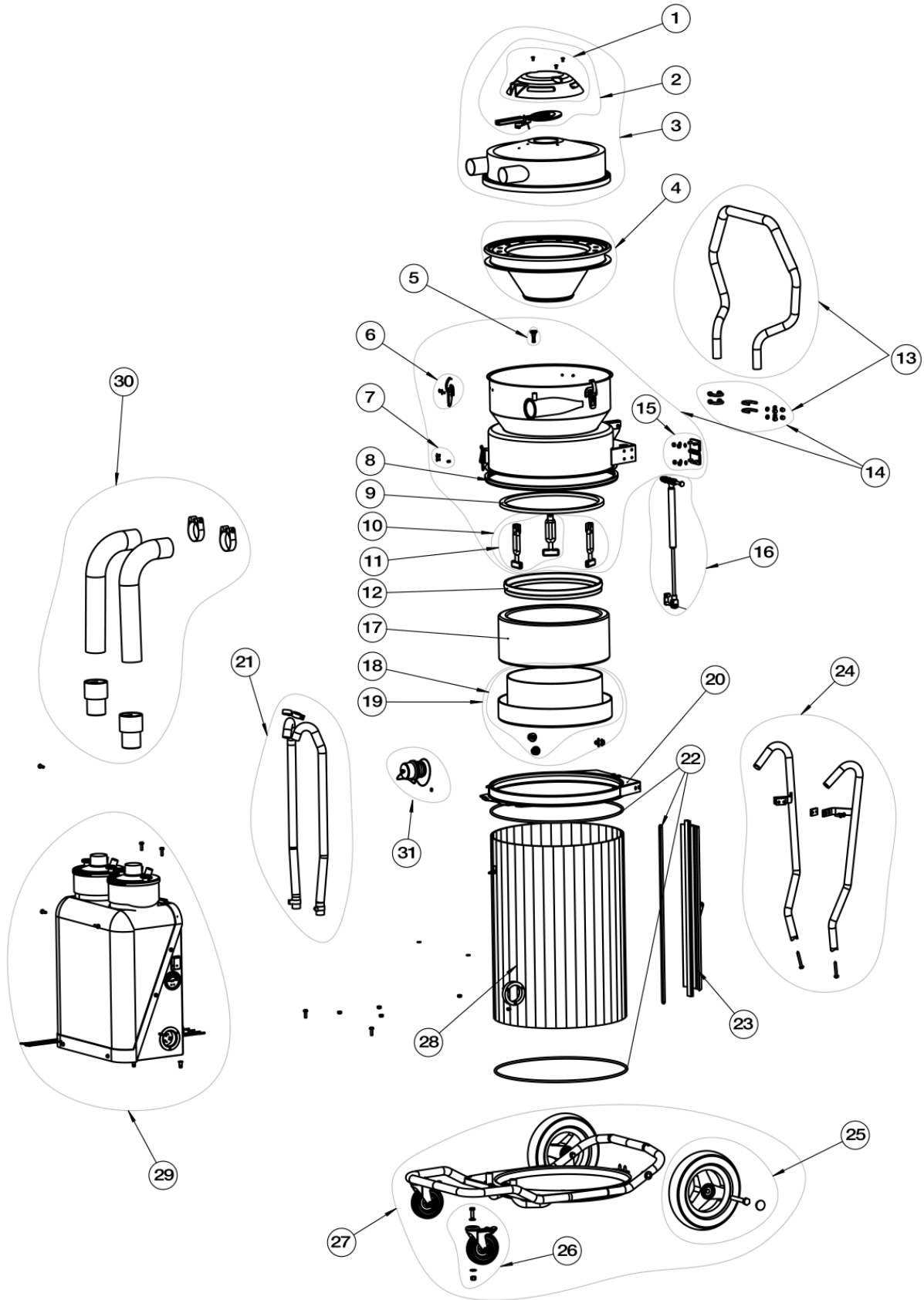


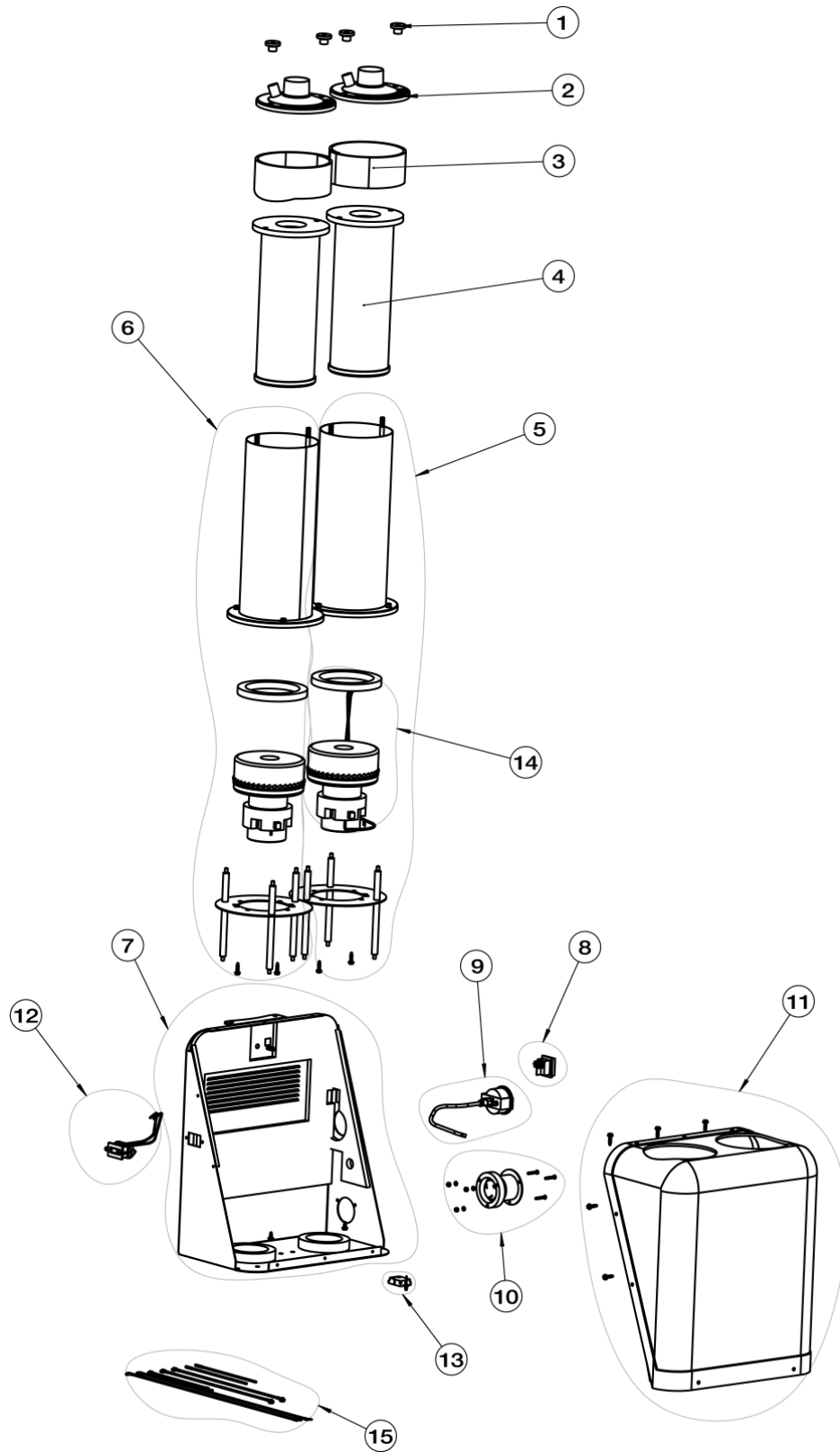
BONA PORTABLE DCS 2.0 AMO530020



BONA PORTABLE DCS 2.0 AMO530020

Pos	Item	Description
01	ASO539081	Top cover kit ex. clean unit
02	ASO539127	Cleaning unit
03	ASO539041	Cover complete
04	ASO539032	Folded Course Filter DCS II
05	ASO539745	Hose Locking
06	ASO539799	Tension Set Complete (3 pcs)
07	ASO539372	Hook Clamp 118-G3
08	ASO539451	Gasket L=1270mm
09	ASO539158	Extra gasket cyclone/Longopac
10	ASO539134	Rubber straps (3 pcs)
11	ASO539144	Rubber straps (2 pcs)
12	ASO539108	Gasket Ring
13	ASO539148	Handle Complete
14	ASO539080	Cyclone Complete
15	ASO539155	Hinge Set (2 pcs)
16	ASO539146	Gas Spring Complete
17	ASO539001	Longopac box 4-pack
18	ASO539145	Longopac Bracket 2-Attachment
19	ASO539135	Longopac Bracket 3-Attachment
20	ASO539887	Container Bracket Over
21	ASO539150	Vacuum Hose
22	ASO539149	Screw/Sealing Set to Container
23	ASO539438	Back Rail
24	ASO539147	Slide Protection Set
25	ASO539151	Rear wheel set (2 pcs)
26	ASO539152	Front wheel set
27	ASO539042	Wagon kit
28	ASO539560	Container
29	ASO539043	2 motor & cover kit
30	ASO539044	Vacuum connection hose kit
31	ASO539053	Inlet seal kit
Not shown	AS2000440	Vacuum hose kit 2" x 33' with cuffs
Not shown	ASO539049	Vacuum hose/machine connector
Not shown	AS3100272	2" hose cuff
Not shown	AS3100670	2" x 1.5" slip cuff
Not shown	AS0001476	35' 20amp DCS 2.0 power cord

BONA PORTABLE DCS 2.0 AMO530020



BONA PORTABLE DCS 2.0 AMO530020

Pos	Item	Description
01	ASO539289	Easy row cap nut (2pcs)
02	ASO539022	HEPA Filter Cover
03	ASO539023	HEPA Filter Seal
04	ASO539033	HEPA Filter
05	ASO539024	Motor tube (with nipple)
06	ASO539027	Motor tube (without nipple)
07	ASO539028	Chassis kit
08	ASO539011	On/off switch
09	ASO539452	Vacuum meter
10	ASO539029	20amp twist lock inlet
11	ASO539037	Motor cover
12	ASO903888	Hour meter
13	ASO539039	Soft start
14	ASO539040	Motor 120v 1200w
15	ASO539046	Cable kit 120v

